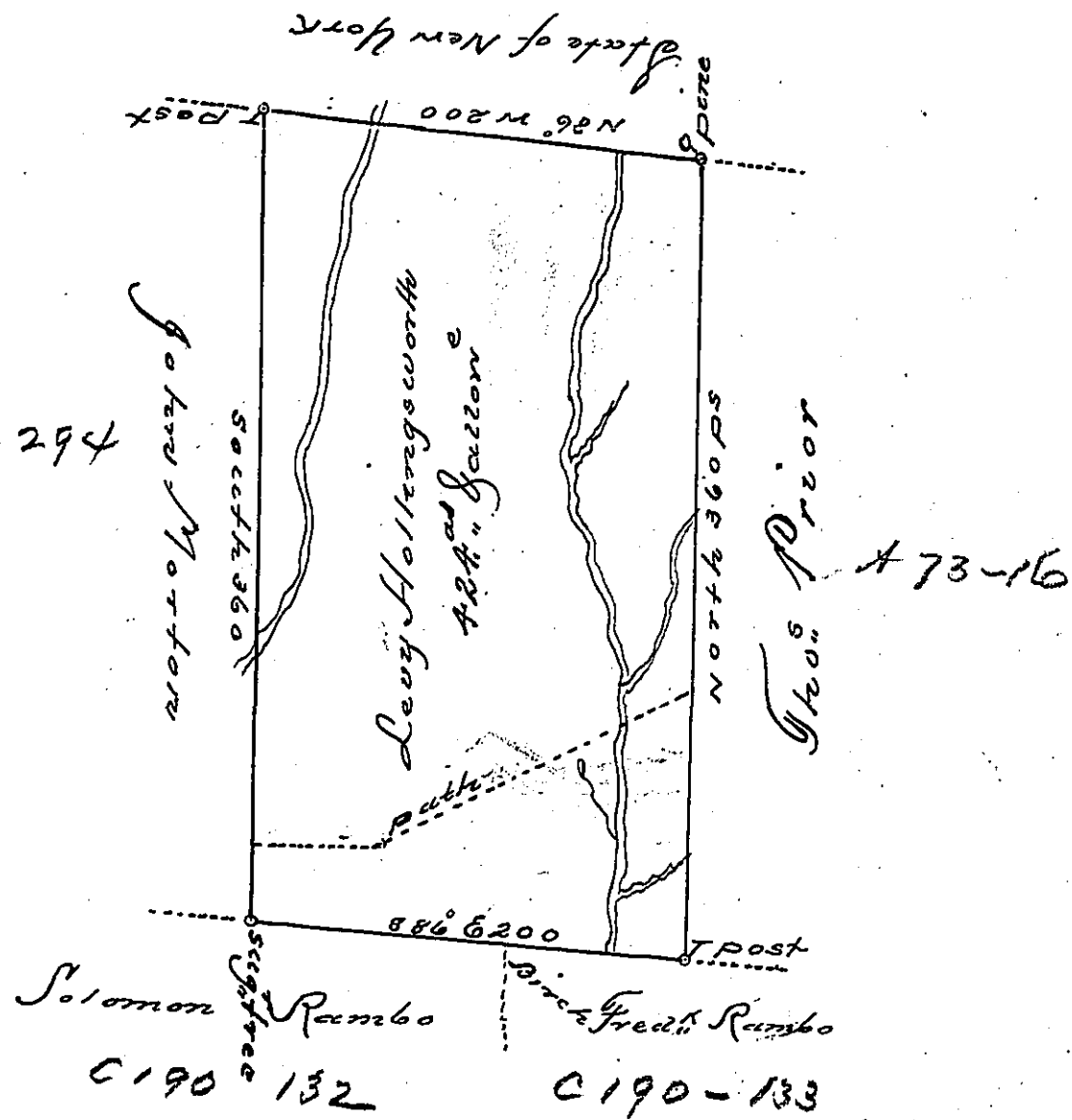


D-30-294

A 73-16



A Draught of a tract of land, called Situate joining the New York Line land Survey for Thos. Prior & others in Northumberland County, containing four hundred & twenty four acres & allowance of six per cent for Roads &c. Surveyed for Levy Hollingsworth the 14th Day of Sept. 1784. in pursuance of a warrant dated the 2^d Day of July, 1784.

By
 Wm. Gray S.S.

To John Lukens Esq.
 Secy. Gen.

IN TESTIMONY that the above is a copy of the original remaining on file in the Department of Internal Affairs of Pennsylvania, made conformably to an Act of Assembly approved the 16th day of February, 1833, I have hereunto set my Hand and caused the Seal of said Department to be affixed at Harrisburg, this twenty third day of May, 1905,

David P. [Signature]
 Secretary of Internal Affairs.